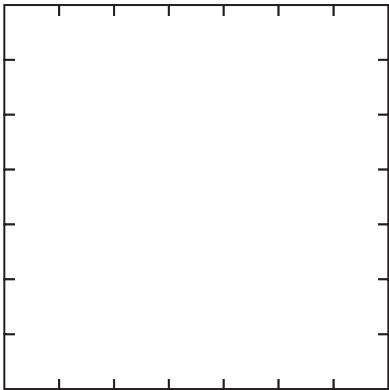
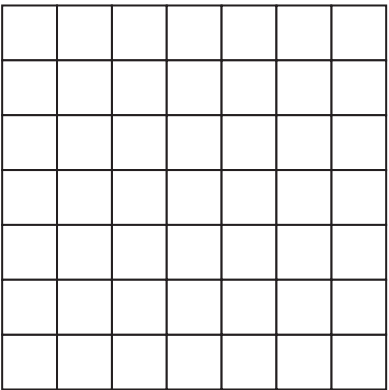


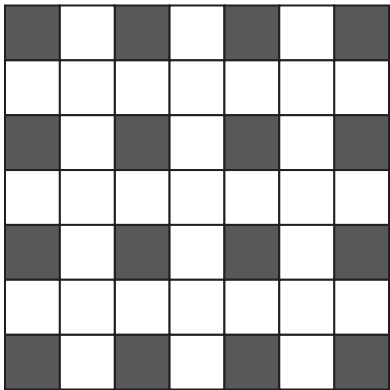
BASIC WEAVING



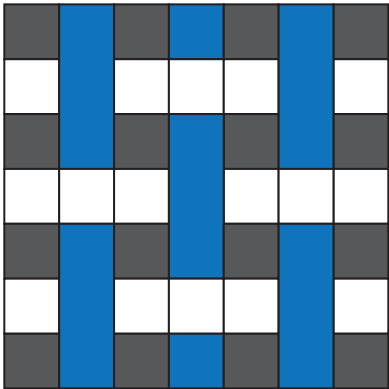
1. Divide each side of a square into 7 parts.



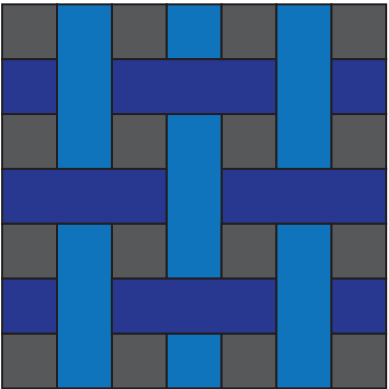
2. Connect the marks.



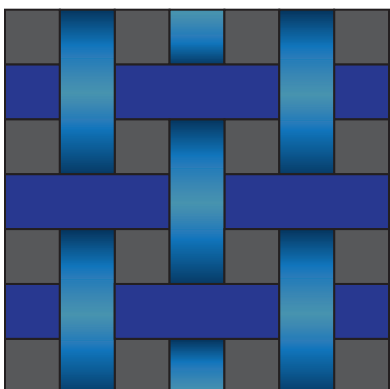
3. Fill in the background areas as shown (every other square in every other row).



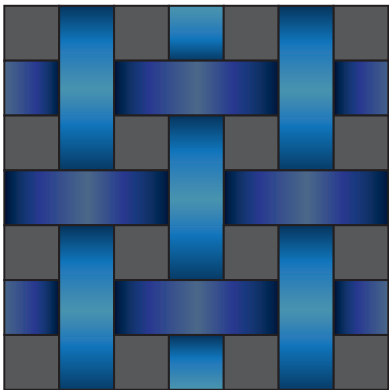
4. Combine squares into visible vertical units as shown (three squares, skip one, three squares, etc.)



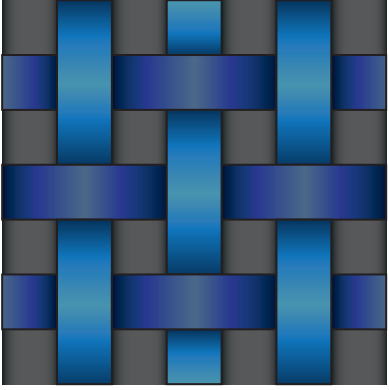
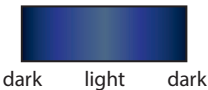
5. Combine squares into visible horizontal units as shown - same ratio - three squares to one.



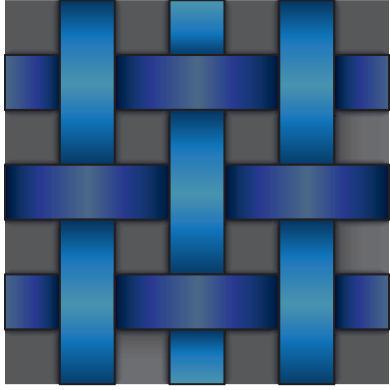
6. Shade the vertical stripes:



7. Shade the horizontal stripes:



8. Add background shadows on both sides of the vertical stripes.



9. Add background shadows on both sides of the horizontal stripes.